

This blank area falls outside the coverage of the relevant aerial photograph
鳥瞰照片並不覆蓋本空白範圍



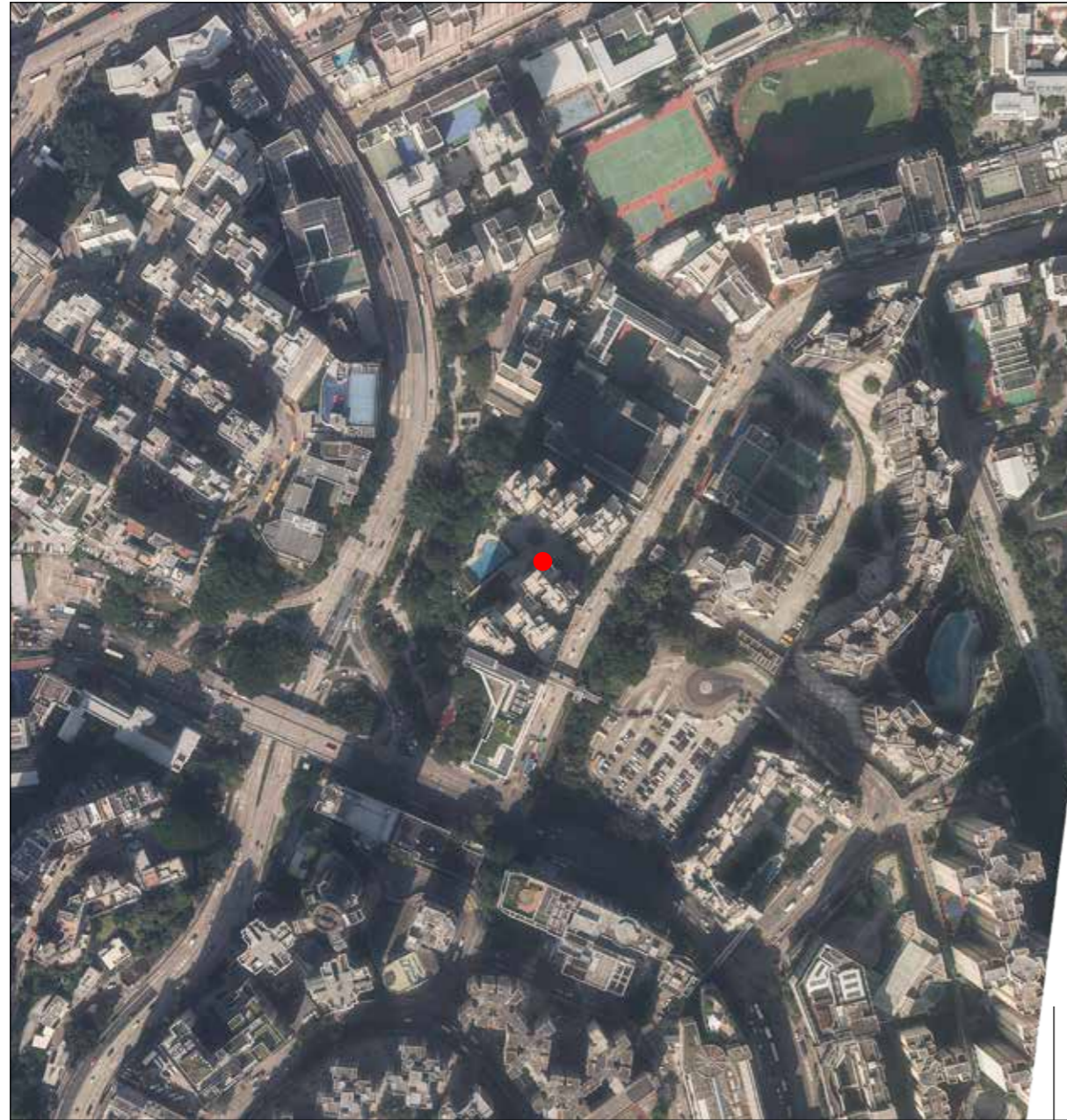
● Location of the Development
發展項目的位置

Adopted from part of the aerial photograph taken by the Survey and Mapping Office of the Lands Department at a flying height of 6,900 feet, Photo No. E167495C, dated 8th December 2022.
摘錄自地政總署測繪處於2022年12月8日在6,900呎飛行高度拍攝之鳥瞰照片，編號為E167495C。

Survey and Mapping Office, Lands Department, The Government of HKSAR © Copyright reserved – reproduction by permission only.
香港特別行政區政府地政總署測繪處版權所有，未經許可，不得複製。
The aerial photograph is provided by the Hong Kong GeoData Store and intellectual property rights are owned by the Government of the HKSAR.
鳥瞰照片由香港地理數據站提供，香港特別行政區政府為知識產權擁有人。

Note 附註:
Due to technical reasons, this aerial photograph has shown more than the area required under the Residential Properties (First-hand Sales) Ordinance.
因技術性問題，此鳥瞰照片所顯示的範圍超過《一手住宅物業銷售條例》的規定。





● Location of the Development
發展項目的位置

This blank area falls outside the coverage of the relevant aerial photograph
鳥瞰照片並不覆蓋本空白範圍

Adopted from part of the aerial photograph taken by the Survey and Mapping Office of the Lands Department at a flying height of 6,900 feet, Photo No. E167496C, dated 8th December 2022.
摘錄自地政總署測繪處於2022年12月8日在6,900呎飛行高度拍攝之鳥瞰照片，編號為E167496C。

Survey and Mapping Office, Lands Department, The Government of HKSAR © Copyright reserved – reproduction by permission only.
香港特別行政區政府地政總署測繪處版權所有，未經許可，不得複製。
The aerial photograph is provided by the Hong Kong GeoData Store and intellectual property rights are owned by the Government of the HKSAR.
鳥瞰照片由香港地理數據站提供，香港特別行政區政府為知識產權擁有人。

Note 附註:
Due to technical reasons, this aerial photograph has shown more than the area required under the Residential Properties (First-hand Sales) Ordinance.
因技術性問題，此鳥瞰照片所顯示的範圍超過《一手住宅物業銷售條例》的規定。

